

Voluminized Products



Textiles
ECO / ECOS

Technical Data Sheet

Technical characteristics (nominal values)

S/I units (tex) type & TPM	Inch - pounds units Type & Tpi	Package weight		LOI %	Nominal breaking strength (N)	Packaging reference
		kg	lbs			
ECO9 T515 T10C	ETG 9.7 T10C	4,40	9,70	0,25	65	1
ECO9 T650 T10C	ETG 7.7 T10C	4,40	9,70	0,25	100	1
ECO9 T1030 T10C	ETG 4.8 T10C	4,00	8,82	0,25	140	1
ECO9 T1290 T10C	ETG 3.9 T10C	5,00	11,03	0,25	230	1
ECO9 T1440 T10C	ETG 3.5 T10C	4,90	10,80	0,25	230	1
ECO11 T220 T10C	ETH 22.6 T10C	4,40 / 9,90*	9,70/21,83*	0,25	12	1 / 2
ECO11 T330 T10C	ETH 15.1 T10C	4,40 / 10,00*	9,70/22,05*	0,25	25	1 / 2
ECO11 T440 T10C	ETH 11.3 T10C	4,40 / 9,60*	9,70/21,16*	0,25	35	1 / 2
ECO11 T880 T10C	ETH 5.7 T10C	4,50	9,92	0,25	85	1
ECO13 T1300 T10C	ETK 3.8 T10C	4,70	10,36	0,25	160	1
ECO13 T2500 T10C	ETK 2.0 T10C	5,00	11,02	0,25	420	1
ECO14 T665 T10C	ETL 7.5 T10C	4,30 / 10,60*	9,48 / 23,37*	0,25	33	1/ 2
ECO14 T5000 T10C	ETL 1.0 T10C	7,90	17,42	0,25	1000	1
ECO14 T10000 T10C	ETL 0.5 T10C	9,00-13,00	19,85-28,67	0,25		1
ECO14 T15000 T10C	ETL 0.3 T10C	9,00-13,00	19,85-28,67	0,25		1

ECOS9 T650 S45 T10C	ETG 7.7 1.12S T10C	3,85	8,49	0,25	110	3
ECOS9 T650 x2 S45 T10C	ETG 7.7 1/2 1.12S T10C	3,90	8,60	0,25	200	3
ECOS9 T1030 S45 T10C	ETG 4.8 1.12S T10C	3,85	8,49	0,25	140	3
ECOS9 T1290 S45 T10C	ETG 3.9 1.12S T10C	3,80	8,38	0,25	210	3
ECOS9 T1290 x2 S45 T10C	ETG 3.9 1/2 1.12S T10C	3,90	8,60	0,25	410	3
ECOS9 T1290 x2 Z45 T10C	ETG 3.9 1/2 1.12Z T10C	3,90	8,60	0,25	440	3
ECOS9 T1290 x4 Z45 T10C	ETG 3.9 1/4 1.12Z T10C	3,85	8,49	0,25	570	
ECOS9 T1290 x2x2 Z45 T10C	ETG 3.9 2/2 1.12Z T10C	3,85	8,49	0,25	600	3
ECOS9 T1440 S30 T10C	ETG 3.5 0.75S T10C	3,80	8,38	0,25	220	3
ECOS9 T2000 Z45 T10C	ETG 2.5 1.12Z T10C	3,90	8,60	0,25	300	3
ECOS9 T2500 S30 T10C	ETG 2.0 0.75S T10C	3,90	8,60	0,25	420	3
ECOS11 T1420 S45 T10C	ETH 3.5 1.12S T10C	3,75	8,27	0,25	210	3
ECOS13 T2500 S30 T10C	ETK 2.0 0.75S T10C	3,75	8,27	0,25	420	3

*) big package upon request

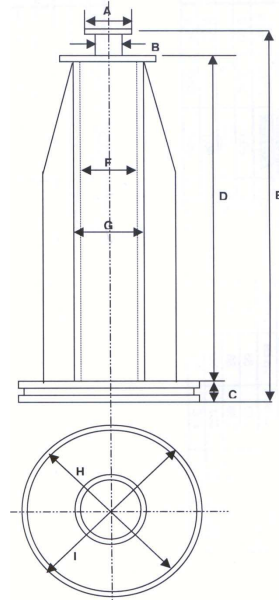
ECO products available on tubes: dimensions in mm and inches

		Height	External diameter	Internal diameter
Tube Ref 1 / Ref 2	mm	280 / 430	92 / 164	80 / 152
	inches	11,02 / 16,93	3,62 / 6,46	3,15 / 5,98
Package ECO	mm	260	max. 280	
Packaging Ref. 1	inches	10,24	max. 11,02	
Big Package ECO	mm	410	max.380	
Packaging Ref. 2	inches	16,14	max.14,96	

ECO Tube



ECOS Bobbin H8 Ref. 3

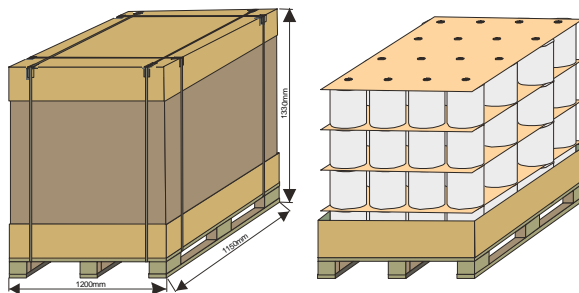


ECOS products on bobbin H8: dimensions in mm and inches

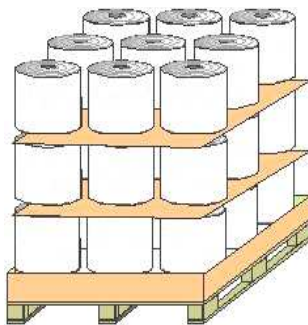
	A	B	C	D	E	F	G	H
mm	63,0	44,0	18,5	375,0	446,0	82,9		186,0
inches	2,48	1,73	0,73	14,76	17,56	3,26		7,32

Packaging

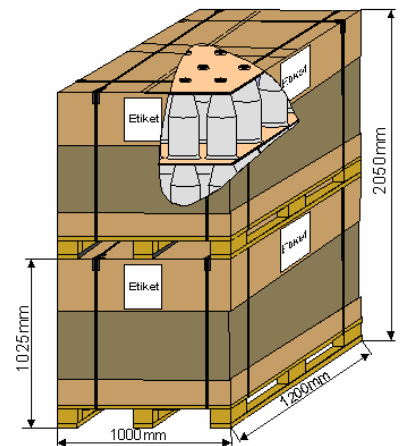
ECO (Reference 1)



ECO (Reference 2)



ECOS (Reference 3)



Edited by :

SAINT-GOBAIN
VETROTEX

**Saint-Gobain Vetrotex
Deutschland GmbH**
Bicherouxstrasse 61
D-52134 Herzogenrath
Germany
Tel : (49) 2406 81-0
Fax : (49) 2406 7 92 87

Product	Levels per pallet	Packages per level	Number of packages per pallet	Pallet net weight in kg and lbs	Approx. Dimensions L x W x H in mm and inches
ECO Pack.Ref. 1	4	16	64	239 to 819 527 to 1807	1200 x 1150 x 1285 47,28 x 45,31 x 50,59
ECO Pack.Ref. 2	3	9	27	247 to 277 544 to 610	1200 x 1150 x 1500 47,28 x 45,31 x 59,10
ECOS Pack.Ref. 3	2	23	46	115 to 175 253 to 386	1200 X 1000 X 1025 47,28 x 39,40 x 40,35

Saint-Gobain Vetrotex reserves the right to change the information given herein without prior notice.

(05/2007)